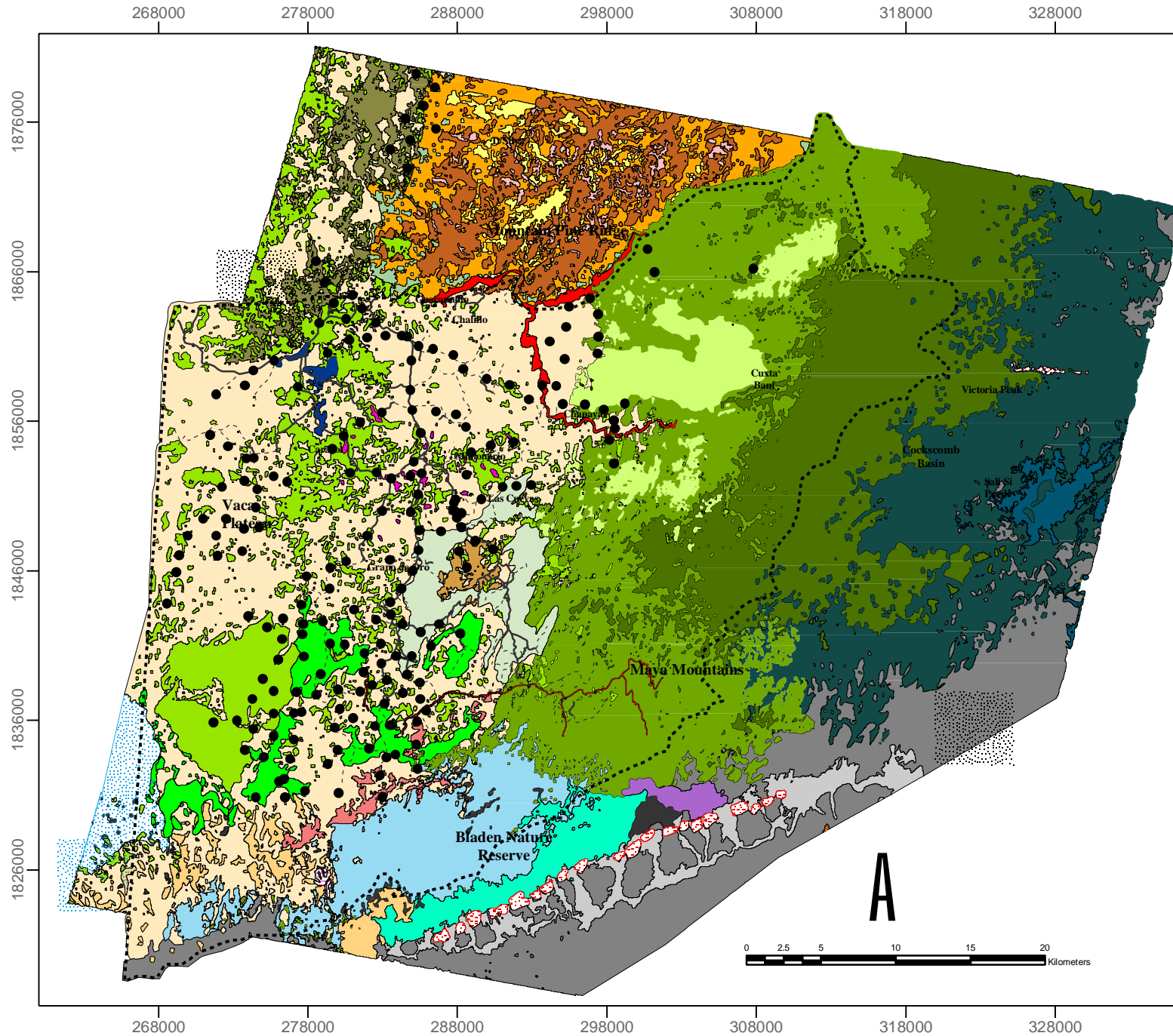
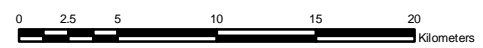
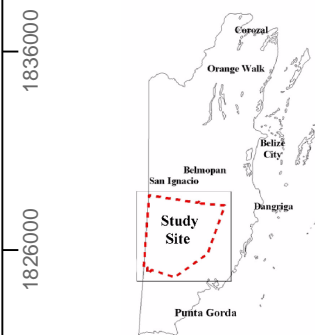


Xate plots across the Greater Maya Mountains



Map features

- Broadleaf:- Class 1, Deciduous forest
- Broadleaf:- Class 1a, Dry deciduous forest
- Broadleaf:- Class 1b, Sinkhole
- Broadleaf:- Class 1c, Deciduous western forest
- Broadleaf:- Class 2, Seasonal forest
- Broadleaf:- Class 2a, Seasonal high forest
- Broadleaf:- Class 3, Semi-evergreen forest (cohune ridge)
- Broadleaf:- Class 4, Semi-evergreen forest (highland)
- Broadleaf:- Class 4a, Semi-evergreen forest (lowland)
- Broadleaf:- Class 5, Transitional semi-evergreen forest
- Broadleaf:- Class 6, Evergreen southern forest
- Broadleaf:- Class 7, Semi-evergreen forest
- Broadleaf:- Class 8, Semi-evergreen forest (broken ridge)
- Broadleaf:- Class 9, Low evergreen palm forest
- Broadleaf:- Class 10, Evergreen cohune forest
- Broadleaf:- Class 11, Gallery forest
- Broadleaf:- Class 12, High evergreen forest
- Broadleaf:- Class 13, Evergreen palm forest
- Broadleaf:- Class 14, Limestone hill top forest
- Broadleaf:- Class 15, Alluvial forest
- Riparian:- Class 16, Riverine
- Savannah:- Class 17, Pine forest
- Savannah:- Class 18, Oak and Pine
- Savannah:- Class 19, Transitional pine, grass savanna and palmettoes
- Savannah:- Class 20, Open grass
- Savannah:- Class 21, Open with *Pinus oocarpa*
- Savannah:- Class 22, Pine, oak and Liquidamber
- Scrubland:- Class 23, Tiger bush
- Scrubland:- Class 24, High altitude forest
- Scrubland:- Class 25, Open pine scrub forest
- Scrubland:- Class 26, Fern dominated
- Scrubland:- Class 27, Milpa zone
- Major trail
- Minor trail
- Chiquibul Forest Reserve
- Final Chiquibul Plot Coordinates Events



A